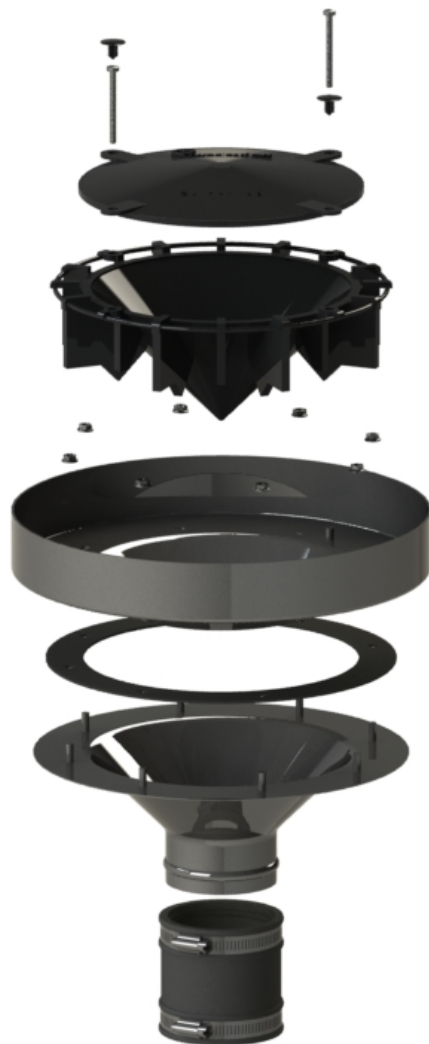


CL 90 Secondary Outlet Assembly



Assembled View



Exploded View

Multi-Purpose Design

RwpClearflow CL 90 Secondary Outlet is a 90mm multi-purpose outlet bowl coupled with a 50mm secondary upstand clamp ring. This outlet can be clamped to any range of roof surface or gutter lining & can be easily adapted to become compatible where outlet welding or a mechanical fixing is Specified. As a secondary, the outlet will operate as a backup if the water level rises to a depth of 50mm or above.

Performance

RwpClearflow CL 90 Secondary Outlet has been tested by CRM rainwater to take up to a maximum of 35 l/s during peak storm conditions. During light rain conditions the outlet will operate effectively by gravity, draining a maximum gravity flow of 8 l/s.

Material

The RWPclearflow CL90 Primary outlet is available in the following materials:

- Stainless Steel 304
- Aluminium

Installation.

Outlets are installed in one of two ways:

Free issue to site.

The main contractor should arrange for a patch of membrane 500mm x 500mm to be issued to RwpClearflow offices.

Free issue to the gutter supplier for off-site fixing into the gutters.

The outlets are made up loosely and issued to the gutter supplier who fixes them to the gutter under their factory conditions.

Critical dimensions

